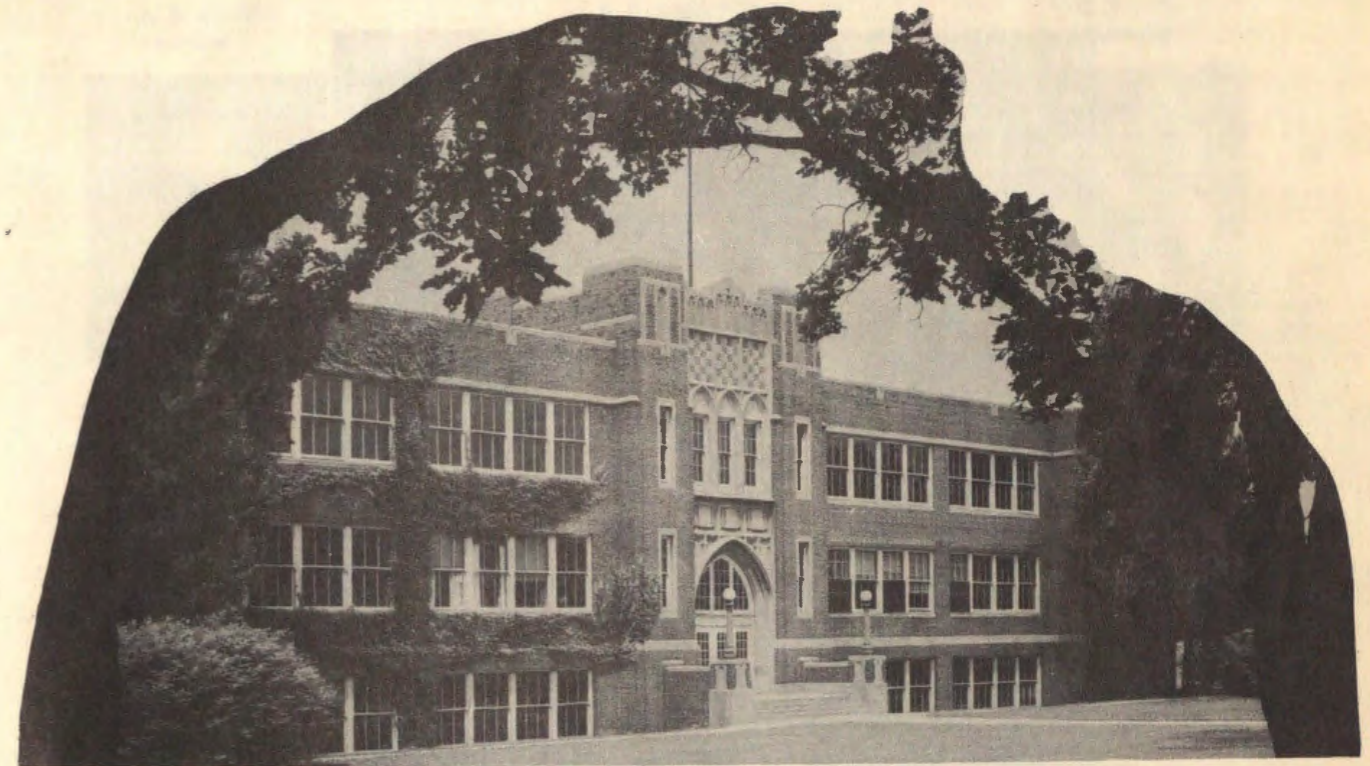


The

Challenge

50

The
CHALLENGE



By
THE SENIOR CLASS
of
COMMUNITY HIGH SCHOOL
WEST CHICAGO, ILLINOIS
1950

• • • **D**EDICATION



To NORMA JEAN STAHL,
our teacher and friend, who has proved that
adviser-student relationships
can be happy ones.

—The Class of 1950

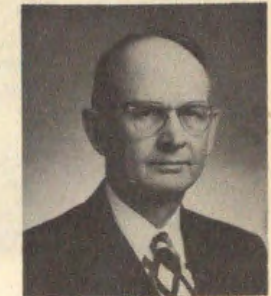
Board of Education



R. A. KELSEY
President



S. D. BISHOP
Principal



C. A. LEE
Secretary



M. C. FINK



R. S. STUART



C. E. OWEN



C. E. MACK



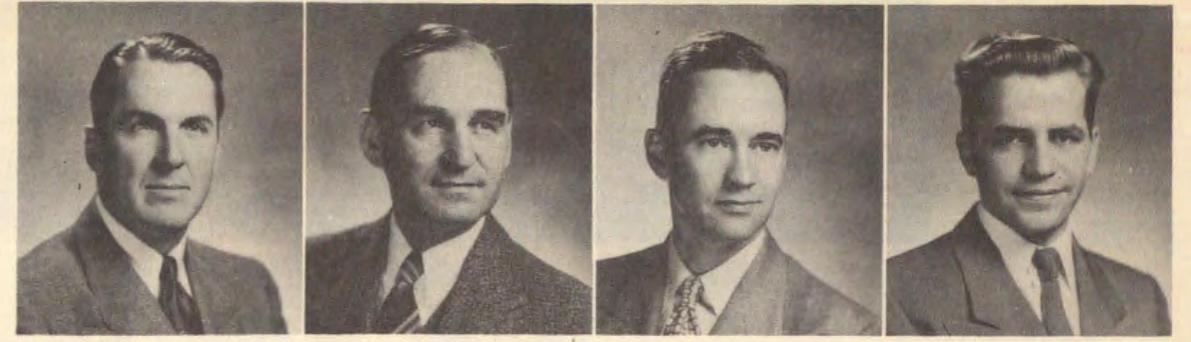


Laura M. Abbott
Music

Marie W. Balshiser
Mathematics

G. P. Barthell
Science

Grace Edson
Home Economics



Howard Fletcher
Coach
Biology

H. B. Howard
Music

V. R. Jahns
Coach
Industrial Arts

R. A. Kiiskila
Typing
Shorthand



Helen M. Koupal
Librarian
English

Elizabeth J. Mahoney
History

Ann R. Moore
English

FACULTY



Flora A. Offner
Physical Education

Narina T. Paxson
School Nurse

Robert E. Price
Coach
Industrial Arts



J. D. Smith
Social Science

Norma J. Stahl
English
Latin

Winifred Thomassen
Bookkeeping
Office Secretary



A. W. Purnell
Janitor

L. F. Voels
Janitor

J. E. Wurster
Janitor



ACHESON, ROBERT
"Dick"



BARBREY, ORLAND
"S:agg"
Football 1, 2, 3, 4 . . . bas-
ketball 1, 2, 3 . . . track 1, 2,
3 . . . Letterman's Club 3, 4
. . . movie projector operator.



BESCH, FRANCES
"Fanny"
We-Go 4 . . . Pep Club . . .
Bowling 3.



BESCH, GEORGE
"George"
Transfer from Immaculate
Conception, Elmhurst.



BOOTH, ELAINE
G.A.A. 1, 2, 3, 4 . . . We-
Go 1, 2, 3, 4 . . . Pep Club 1,
2, 3 . . . Challenge.



BREHM, MARGARET
"Mugger"



BROWN, CARLOTTA
"Tootsie"
Glee Club 2 . . . Art Class
4 . . . bowling 2 . . . publicity
for parties.



BURHANS, WILLIAM
"Willie"
Football 4 . . . tumbling 1,
2, 3, 4.



CARLSON, JEAN
"Jeannie"
Glee Club 2, 3, 4 . . . Fresh-
man Chorus . . . Pep Club 2,
4 . . . We-Go 2, 3, 4.

SENIORS



CHEKAL, BERNADINE
"Ber"
G.A.A. 1, 4 . . . Freshman
Chorus . . . Stunt Show 1 . . .
various party committees.



CLAFLIN, DIXIE
"Dix"
G.A.A. 2 . . . We-Go 4 . . .
Junior Play . . . Pep Club 2, 3,
4 . . . Student Council 4.



DABBERT, DOROTHY
"Dorothy"
G.A.A. 1, 2, 3, 4 . . . Pep
Club 1, 2, 3, 4 . . . Class
V.P. 3 . . . We-Go 3, 4 . . .
Prom Committee . . . Junior
Play . . . Band 1, 2, 3, 4 . . .
Glee Club 1, 4.

DALEIDEN, DAVID
"Doog"
Football 1, 2, 3, 4 . . . bas-
ketball 1, 2, 3 . . . track 1, 2,
3 . . . Letterman's Club 4 . . .
Thanksgiving and Xmas Par-
ties committees.

DARLING, TERRY
"Terry"
Transfer from Wheaton 1
. . . G.A.A. 1, 2, 3, 4 . . .
Challenge . . . We-Go 4 . . .
decoration committee for Xmas
Party, S.A. Dance.

DEITZ, JOHN
"Pancho"
Football 1, 2, 3, 4 . . . bas-
ketball 1, 2, 3 . . . track 1, 2,
3, 4 . . . Student Council 3
. . . Letterman's Club 2, 3, 4
. . . We-Go 4.

DEMAR, RICHARD
"Jody"
Football 2.

DENNERLEIN, DONALD
"Don"
We-Go 1, 2 . . . Class Trea-
surer 2 . . . Class Pres. 3 . . .
Prom Comm. . . Challenge.

DIEBOLD, ROBERT
"Bob"
Check room Committee for
Xmas Party . . . Various other
committees.





DIEHL, KATHLEEN
"Kathy"

Xmas Party committee . . .
class secretary 4 . . . Stunt
Show 1.



DIETER, DOLORES
"Dee"

Transfer from Nazareth
Academy 1 . . . G.A.A. 1, 2, 3
pres. 4 . . . Junior Play . . .
Pep Club 3, 4 . . . Hallowe'en
party committee.



DUNAGAN, GWENDOLYN
"Gwen"

G.A.A. 1, 2.



ELSON, RICHARD
"Elsie"

Football 4 . . . Basketball 4
. . . Dance Band 1, 2, 3 . . .
Womanless Wedding.



FESSLER, JOAN
"Joan"

Pep Club 1, 2 . . . Class
Secretary 3 . . . Glee Club 2,
3, 4 . . . Prom Comm.



FINICAL, JANET
"Finie"

Junior Play . . . G.A.A. 1, 2,
3, 4 . . . Pep Club 2, 3, 4 . . .
Piano accompanist.



FOWLER, VIRGINIA
"Ginny"

G.A.A. 1, 2, 3, 4 . . . Stu-
dent Council 2, 3, 4 . . .
prompter for Junior Play . . .
Challenge . . . Prom commit-
tee . . . Band 1, 2, 3, 4 . . .
D.A.R.



FRYE, JACK
"Jack"

Various committees.



GARCIA, PETER
"Pete"

SENIORS



GERBIG, PRISCILLA
"Honey"

G.A.A. 1, 2, 3, 4 . . . Pep
Club 2, 3, 4 . . . Glee Club 2,
3 . . . Freshman Chorus . . .
Bowling 2 . . . Party Com-
mittees.



GOLAN, JAMES
"Jim"

Basketball 1, 2, 3, 4 . . .
Lettermen's Club 4 . . . Class
President 1 . . . Student Coun-
cil 3, Pres. 4 . . . Pep Band 4
. . . Band 1, 2, 3, 4 . . . Drum
Major 4 . . . Challenge . . .
Premier Boy's State . . . Prom
Comm. . . . Valedictorian.



GROUSTRA, CAROL
"Carol"

G.A.A. 1, 2, 3, 4 . . . Pep
Club 1, 2, 3, 4 . . . Orchestra
1, 2, 3, 4 . . . Junior Play . . .
Party committees.

HAASE, JEROME
"Jerry"

Movie projector operator . . .
publicity committees.

HATTENDORF, AUDREY
"Audrey"

We-Go 3 . . . Pep Club 2, 3,
4.

HEINZ, MARLENE
"Marlene"

We-Go 3, 4 . . . G.A.A. 1, 2,
4 . . . Pep Club 2, 3 . . . class
treasurer 3.

HEISER, CATHY
"Cathy"

Pep Club 2, 3 . . . G.A.A.
1, 2, 3, 4 . . . Cheerleader 3,
4 . . . We-Go 1 . . . Challenge
. . . Sen.-Alumni Dance.

HENDERSON, CARLENE
"Carl"

G.A.A. 1, 2, 4 . . . Pep Club
. . . Class Secretary 2 . . .
Treasurer 4 . . . Lake Worth
High School 3.

HENSEL, ROBERT
"Bob"

Band 1, 2, 3, 4 . . . Dance
Band 1, 2, 3, 4 . . . Pep Band
2, 3, 4.





HILL, CHARLES
"Chuck"

Basketball 1, 2, 3, 4 . . . track 1, 2, 3, 4 . . . soft ball 3 . . . Letterman's Club 4 . . . decoration committees for Xmas Party and Senior-Alumni Dance.



HORN, JOHN
"Johnny"

Challenge artist . . . publicity committees.



KAELIN, FRANCES
"Piggy"

We-Go 2, 3, 4 . . . G.A.A. 3, 4 . . . Pep Club 3, 4 . . . Stunt Show 1 . . . Laff It Off 3.



KARP, ROBERT
"Harpo"

Football 1, 2, 3, 4 . . . track 1, 2 . . . Challenge photography . . . party committees.



KEARNS, THOMAS
"Tom"

We-Go 2, 3, 4 . . . Prom Committee . . . Glee Club . . . Stunt Show.



KLING, JACK
"Jocko"

Junior Play . . . basketball 2, 3, 4 . . . track 2, 3, 4 . . . Pep Band 2, 3, 4 . . . Lettermen's Club . . . VP 3 . . . Secretary 4 . . . Dance Band 3, 4.



KRONING, DEAN
"Dean"

Letterman's Club 4 . . . Football 4 . . . track 1, 3, 4 . . . Basketball 3 . . . Roosevelt Military Academy 2.



LANZ, ROBERT
"Bob"

Letterman's Club 3, 4 . . . football 2, 3, 4 . . . Band 1, 2, 3, 4 . . . Tumbling 3, 4 . . . Challenge . . . Stunt Show 1 . . . Laff It Off 3.



LELIOS, MIKE
"Totsy"

Football 1, 2, 3, 4 . . . We-Go 1 . . . Letterman's Club 2, 3, 4 . . . Tumbling 3, 4 . . . 3, 4

SENIORS



LUNAK, SANDRA
"Sandy"

G.A.A. 1, 2, 3 . . . We-Go 3, 4 . . . Pep Club 1, 2, 3, 4 . . . Stunt Show 1 . . . Freshman Chorus . . . Challenge . . . Party Committees.



LYON, NANCY
"Nanny"

G.A.A. 1, 2, 3, 4 . . . We-Go 3, 4 . . . Pep Club 1, 2, 3, 4 . . . Stunt Show 1 . . . Freshman Chorus . . . Laff It Off 3 . . . Party Committees . . . Challenge.



MC ALEESE, JOHN
"Letty"

Football 1, 2, 3, 4 . . . Basketball 1, 2, 3, 4 . . . Lettermen's Club 4 . . . Track 1, 2, 3, 4 . . . Class Pres. 4 . . . Student Council 1.

MC MAHON, BRUCE
"Bruce"

Band 1, 2, 3, 4 . . . Orchestra 3, 4 . . . Stunt Show 1 . . . Laff It Off 3 . . . We-Go 1, 2, 3, 4.

MC NICHOLS, PATRICIA
"Pat"

G.A.A. 1, 2, 3, 4 . . . Pep Club 1, 2, 3, 4 . . . Orchestra 2, 3, 4 . . . We-Go 3 . . . G.A.A. basketball captain 4.

MOORE, JAYNE
"Jayne"

Pep Club 1 . . . G.A.A. 1, 2, 3, 4 . . . Freshman Chorus . . . Stunt Show 1 . . . We-Go . . . Challenge artist.

MUELLER, AVIS
"Muscles"

G.A.A. 4 . . . We-Go 1, 2, 3 . . . Stunt Show 1 . . . Freshman Chorus . . . Glee Club 2, 3 . . . Pep Club 3, 4 . . . Party Committees.

MUELLER, KENNETH
"Carver"

Football 1, 2, 3, 4 . . . basketball 1, 2, 3 . . . track 1 . . . Class Treasurer 2.

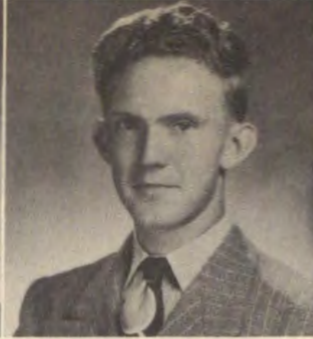
MUNSON, EDWARD
"Eddie"

Basketball 1 . . . Intramural basketball 4.





MURPHY, JOHN
"Murph"
Various committees.



NELSON, BRUCE
"Phony"
Football 1, 2, 4 . . . basket-
ball 1, 2, 4 . . . track 1, 2, 4
. . . Band 1, 2 . . . Student
Council 1, 2 . . . Letterman's
Club 1, 2, 4 . . . softball 1, 2,
3, 4 . . . Batavia High School.



OLESEN, BARBARA
"Barb"
Transfer from Downers
Grove . . . G.A.A. 3 . . . Salu-
tatorian.



PAZIN, EUGENE
"Gene"
Football 1, 2, 3, 4 . . .
Basketball 1, 2, 3 . . . Track
1, 2, 3 . . . Challenge . . .
Party committees.



PENDELL, MARY
"Mindy"
G.A.A. 1, 2, 3, 4 . . . Pep
Club 1, Sec. 2, 3, 4 . . . Stu-
dent Council 3 . . . Class
Secretary 1 . . . Band 1, 2, 3,
4 . . . Orchestra 1, 2, 3, 4 . . .
Junior Play . . . Party Com-
mittees.



PHILLIPS, DAVID
"Dave"
Art class . . . Intramural
basketball 4.



RAKOW, SHIRLEY
"Sharlie"
Pep Club . . . Laff It Off 3
. . . entertainment committees.



RAYMOND, ROBERT
"Bo"
Challenge . . . Junior Play
. . . Class Pres. 2 . . . class
VP 4 . . . We-Go 2, 3, 4 . . .
football 1, 2, 3, 4 . . . basket-
ball 1, 2, 3 . . . track 1, 2, 3, 4
. . . Letterman's Club 1, 2, 3
. . . Pres. 4 . . . Premier Boys'
State.



REVAK, WALTER
"Wally"
Transfer from Chicago.

SENIORS



REW, MARGARET
"Margie"
G.A.A. 1, 2, 3, 4 . . . Pep
Club 1, 2, 4 . . . Glee Club 4.



SCHRAMER, DONALD
"Don"
Football 1, 2 . . . Stunt
Show 1 . . . Intramural bas-
ketball 3, 4.



SHEAHAN, JAMES
"Jake"
Various committees.

SNYDER, RICHARD
"Snyd"
Student Council 4 . . .
Dance Band 2, 3 . . . Junior
Play . . . We-Go 2.

STOPKA, WILLIAM
"Bill"
Football 2 . . . Track 3 . . .
bowling 3 . . . intramural
basketball 3.

STREIT, SHIRLEY
"Shrimp"
Pep Club 1, 2, 3, 4 . . .
Glee Club 2 . . . Stunt Show
1 . . . Class VP 2 . . . Laff It
Off 3.

STURN, MARILYN
"Stem"
G.A.A. 1, 2, 3, 4 . . . Pep
Club 1, 2, 3, 4 . . . Freshman
Chorus . . . Stunt Show 1 . . .
Laff It Off 3.

THIELKING, VIVIENNE
"Viv"
Pep Club 3 . . . Freshman
Chorus . . . Glee Club 2 . . .
We-Go 2, 3.

WHEELER, KATHLEEN
"Kay"
Challenge . . . Junior Play
. . . G.A.A. 1, 2, 3, 4 . . .
Pep Club 1, 2, 3, 4 . . . We-
Go 2.



S
E
N
I
O
R
S



WILCOX, LUCY
"Lucy"
G.A.A. 1, 2, 3, 4 . . . We-Go 1, 2, 3, 4 . . . Pep Club 1, 2, 3, 4 . . . Various committees.



WILSON, BETTY
"Betty"
G.A.A. 1, 2, 3, 4 . . . Freshman Chorus . . . Freshman Day program 1 . . . various committees.



WOLSFELD, MARVIN
"Vedo"
Transfer from Aurora.



ZARATE, RUBEN
"Ruben"
We-Go 2, 3, 4 . . . Glee Club 1 . . . various party committees.



Top to Bottom: John McAleese (Pres.), Bob Raymond (Vice Pres.), Kathy Diehl (Sec.), Miss Stahl (Adviser), Carlene Henderson (Treas.), Absent.

Juniors



7th Row: Jean Adamson, Chris Armbrust, Dorothee Armbrust, Richard Averill, Ray Badal, Lennie Bartsch, Donna Beardsley, David Bond, Carole Brown, Gloria Brown, Marilyn Brown, Leroy Brummel.
6th Row: Pat Burhans, Diana Burns, Albert Catriz, Georgeanna Chesnut, Gertrude Cosgrove, Jean Crawford, Sandra Cue, Suzi Dettmann, Richard Dierking, Diane Dieter, Verlin Dillard, Bill Dunbar.
5th Row: Roland Fiorini, Doris Geiken, Dorothy Gramer, Don Griffin, Janet Hammer, Georgeanna Harbelis, Sophie Heinz, Otto Homer, Glen Ives, Chalmer Jacob, Audrey Jarchow, Connie Judd.
4th Row: Glenn Keck, David Klingberg, Robert Kovac, Donna Kruse, Richard Lally, Lois Lenertz, Dolores Levey, John Lockie, Pat Lynch, Robert Neumann, Don Nicoski, Ann Owen.
3rd Row: Pat Payton, Lawrence Pesetski, Alice Pester, Rita Pietrobon, Andrea Purdy, Barbara Reed, Iris Robinson, Betty Lou Ruscher, Gene Schlueter, Stanley Schramer, Allene Schusler, Irene Scobey.
2nd Row: Mary Ann Scobey, Bill Shaw, Joan Siemering, Harold Smith, Connie Sprague, Pat Streit, Walter Struckman, Joyce Watanabe, David Weissing, Pat Wheeler, Grace Wiesbrock, Jim Woodward.
1st Row: Helen Wurtz, Don Zuehlke.



Georgeanna Harbelis (Treas.), Pat Streit (Sec.), Sandra Cue (V. Pres.). Seated: Richard Averill (Pres.).

Sophomores



- 7th Row: Dorothy Acheson, Edgar Baethke, Maureen Baker, Pat Berndt, Ralph Blum, Thomas Bollweg, Charles Buhr, John Burian, Grace Cain, Betty Chase, Evelyn Chase, Robert Clement.
- 6th Row: Barbara Cobain, Bud Cook, Joan Crettol, Don Dabbert, Diana Darling, John Dennerlein, Pat Dickey, Ed Diehl, Ed Dierking, Lawrence Dieter, Carol Dodge, Bill Enders.
- 5th Row: Pat Farrell, Wayne Fessler, Robert Fredrickson, Jessie Garcia, Georgiana Giambri, Beverly Glasahagel, Geraldine Gurbacki, Pete Heibel, Dolores Heinz, Georgene Heinz, Otto Heinz, Pat Heisler.
- 4th Row: Roy Hellickson, Pat Hensel, Ruth Hintz, Barbara Hutson, Frank Kimmel, Rodney Kullman, James Lane, Bill Lanz, Kenneth Lenertz, Mary Lister, Sidna Lockie, George Lyman.
- 3rd Row: Kathy Maguire, Rose Marie Marecek, Lois McLeod, Agnes McNichols, Paul Myers, Marilyn Mueller, Joe Murphy, Floyd Olesen, Tom Pattermann, Pat Pester, Davey Phillips, Mary Phillips.
- 2nd Row: Sally Rucker, Barbara Russell, Diane Sandhop, Barbara Sauber, Glen Schlueter, Arvilla Schram, Bette Sheahan, Ken Shelton, Beverlee Simpson, Alice Speck, Herman Stahl, Sharon Stone.
- 1st Row: Don Swenson, Don Thielking, Bud Utterback, Gene Van Dran, Audrey Wegener, Irene Wheeler, Beryl Wheelchel, Frank Whitton, Jim Wilder, Albert Zolin.



Bud Cook (V. Pres.), Mrs. Balzhiser (Adviser), Charles Buhr (Pres.), Georgiana Giambri (Treas.)

Freshmen



- 7th Row: Alan Anderson, Marjorie Armbrust, Arnold Babcock, Gerald Baum, Raymond Berger, Marie Bollweg, Nathlee Ann Bradley, Fae Brinkman, Gayle Brooks, Norma Brown, Joan Bryson, Mary Jane Buckley.
- 6th Row: Fred Bullman, Josephine Campbell, Lyrle Cue, Danny Crane, Ann Davis, Loane Dettmann, Charles Dierks, Betty Lou Dieter, Fred Dixon, Lela Fischer, Ronald Frye, Mary Ann Gardner.
- 5th Row: Charles Goering, Kenneth Golan, Charles Gustafson, Kenneth Havlik, Marilyn Heinberg, Nancy Heinz, Ellen Heiser, John Hill, Donald Homer, Margaret Hoover, Roy Jelinek, Dick Kaelin.
- 4th Row: Don Kaelin, Jim Kaelin, Jack Kammas, Jane Karp, Clara Kearns, Donald Kelly, John Kistenbroker, Gloria Kozlowski, Dick Kroning, Barbara Kruse, Myron LeBaron, Betty Ann Lootens.
- 3rd Row: Genevieve Main, Betty Marecek, Shirley McAleese, Margaret McNichols, Robert Mell, Betty June Miller, James Mishler, Pat Moecker, Irene Munson, Hilary Neylon, Martha Patch, Olivo Pietrobon.
- 2nd Row: Nancy Rakow, John Rawlings, Thomas Rucker, Ray Rush, John Saile, John Sauber, Ralph Schmuengerow, Virginia Scull, Oren Shaw, Sandra Silvasy, Nancy Simpson, Evabeth Stillman.
- 1st Row: Lela Stillman, Louise Streit, Mary Joyce Struckman, Dick Taylor, George Tinnes, Wesley Watanabe, Janice Wegener, William Weinbrecht, Kenneth Wheeland, Lois Wheeland, Roy Wilson, Shirley Young.



2nd Row: Loane Dettmann (S.C.), Charles Gustafson (S.C.), Mr. Smith (Adviser), Kenny Wheeland (S.C.), Louise Streit (S.C.).
1st Row: Oren Shaw (Sec. Treas.), Wesley Watanabe (Pres.), Shirley McAleese (V. Pres.).

Student Council



3rd Row: James Lane, Paul Myers, Richard Snyder.
 2nd Row: Dixie Clafflin, Iris Robinson, Maureen Baker, Barbara Hutson, Otto Homer.
 1st Row: Leonard Bartsch, Virginia Fowler, James Golan, Suzanne Dettmann.

Challenge Staff



2nd Row: Don Dennerlein, Terry Darling, Elaine Booth, Cathy Heiser, James Golan, Virginia Fowler, Gene Pazin, Bob Lanz.
 1st Row: Sandy Lunak, Bob Raymond, Miss Moore, John McAleese, Kay Wheeler.

Dance Band



2nd Row: Jack Kline, Bud Cook, Otto Homer, Rodney Kullman.
 1st Row: Dick Elson, Tom Rucker, Eddie Dierking, Bob Hensel.

Pep Band



2nd Row: Bud Cook, David Weissing, James Golan, Bob Hensel, Herman Stahl.
 1st Row: Jack Kline, Rodney Kullman.

Varsity Football

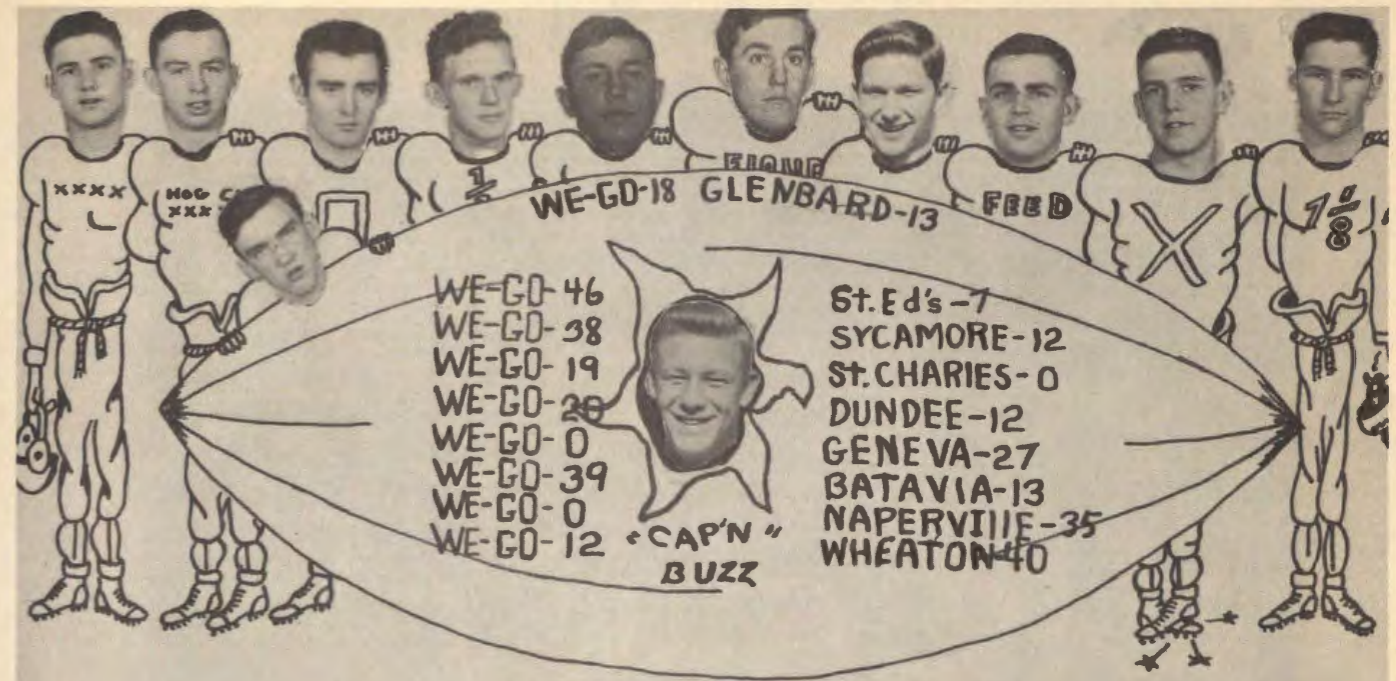


4th Row: Dick Snyder, David Daleiden, Robert Kovac, Don Zuehlke, Bill Burhans, Ken Mueller, Harold Smith, Leonard Bartsch, Leroy Brummel, Lawrence Dieter.
 3rd Row: Coach Howard Fletcher, Orland Barbrey, Dick Elson, Gene Pazin, John McAleese, Lawrence Pesetski, Bruce Nelson, Bob Karp, Dean Kroning.
 2nd Row: James Lane, John Deitz, Bob Raymond, Bob Lanz, Gene Schlueter, Walter Struckman, Wayne Todd, Coach Robert Price.
 1st Row: Charles Hill, Stanley Schramer, Roland Fiorini, Otto Homer, Albert Catriz, Mike Lellios, Glen Keck, Richard Averill.

Frosh-Soph Football



4th Row: Peter Heibel, Dick Kroning, Bill Lanz, Albert Catriz, Roy Jelinek, Oren Shaw, Bill Enders, Jack Kammes.
 3rd Row: Manager Gene Van Dran, Charles Dierks, Gerald Baum, Charles Gustafson, Frank Whitton, Bob Mell, Alan Anderson, Roy Wilson, Wesley Watanabe, Coach Vernon Jahns.
 2nd Row: Kenneth Wheeland, David Phillips, Robert Clement, Frank Kimmel, Ray Rush, Edward Dierking, Buddy Cook, John Kistenbroker.
 1st Row: Herman Stahl, Kenneth Golan, Kenneth Havlik, Joe Murphy, Kenneth Lenertz.



Varsity Basketball



3rd Row: Coach Robert Price, Robert Kovac, Dean Kroning, Dick Elson, Charles Hill, James Woodward, Richard Averill.

2nd Row: Otto Homer, Albert Catriz, Don Griffin, Jack Kline, David Bond, John McAleese.

1st Row: Bruce Nelson, Leonard Bartsch, James Golan, Paul Myers, James Lane.

Frosh-Soph Basketball



3rd Row: Coach H. Fletcher, Eddie Dierking, Frank Kimmel, Bob Clement, Bob Mell, Glen Schlueter.

2nd Row: Ken Lenertz, Wayne Fessler, Alan Anderson, Herman Stahl, Roy Jelinek.

1st Row: Bud Cook, Dick Kroning, Ken Wheeland, Oren Shaw, Charles Gustafson.



JACK KLINE
GUARD

BOB KOVAC
FORWARD

49 COACH PRICE 50

BRUCE NELSON
GUARD

JIM GOLAN
CENTER

LEONARD BARTSCH
FORWARD

Track



3rd Row: Richard Averill, Bud Cook, Bruce Nelson, John Deitz, Jim Woodward, Orland Barbrey, Bob Karp, Lawrence Pesetski, Jim Lane, Coach Robert Price.
 2nd Row: John McAleese, Eddie Dierking, Bob Raymond, Albert Catriz, Frank Kimmel, Charles Hill, Dean Kroning, Otto Homer.
 1st Row: Don Swenson, Glen Ives, Don Griffin, Jack Kline, Dave Daleiden, Dave Phillips, Glen Schlueter.

Tumbling



2nd Row: Diane Dieter, Carole Brown, Coach Fletcher.
 1st Row: Bill Burhans, Bob Lanz, Lawrence Pesetski.

G. A. A.



7th Row: Joan Bryson, Eva Stillman, Louise Streit, Nancy Simpson, Lois Wheeland, Gayle Brooks, Nathlee Ann Bradley, Shirley McAleese, Pat Streit, Cookie Harbelis, Andy Purdy, Mary Struckman, Genevieve Main, Betty Mueller, Carol Groustra, Dixie Claflin, Terry Darling, Kay Wheeler, Avis Mueller.
 6th Row: Pat McNichols, Nancy Lyon, Iris Robinson, Marilyn Mueller, Irene Wheeler, Audrey Wegener, Dolores Levey, Margie Rew, Pat Heisler, Sharon Stone, Diane Dieter, Sandra Cue, Betty Wilson, Connie Sprague, Irene Munson, Pat Berndt, Lyrle Cue, Marilyn Brown.
 5th Row: Ellen Heiser, Clara Kearns, Jane Karp, Betty Lou Dieter, Ann Davis, Nancy Heinz, Marlene Heinz, Alice Speck, Norma Brown, Diana Darling, Barbara Kruse, Donna Beardesley, Lela Stillman, Ann Owen, Dorothy Gramer.
 4th Row: Kathy Maguire, Genie Heinz, Maureen Baker, Mary Ann Gardner, Janice Wegener, Gloria Kozlowski, Beverly Glasshagel, Doris Geiken, Cathy Heiser, Suzi Dettmann, Bette Sheahan, Pat Dickey, Dorothy Acheson, Dee Heinz, Diane Sandhop, Barbara Hutson.
 3rd Row: Agnes McNichols, Barbara Russell, Sidna Lockie, Mary Lister, Lucy Wilcox, Dolores Dieter, Miss Offner, Elaine Booth, Frances Kaelin, Pat Farrell, Beverlee Simpson, Bernadine Chekal.
 2nd Row: Ginny Fowler, Janet Finical, Jayne Moore, Kathy Diehl, Gloria Brown, Pat Hensel, Loane Dettmann, Mary Buckley, Carol Dodge, Lois McLeod, Martha Patch, Barbara Sauber.
 1st Row: Pat Burhans, Carole Brown, Lois Lenertz, Audrey Jarchow, Dorothy Dabbert, Mary Ann Scobey, Diana Burns, Rita Pietrobon, Irene Scobey, Gerry Gurbacki.

G. A. A. Board



3rd Row: Suzi Dettmann, Dolores Levey, Geraldine Gurbaki, Ginny Fowler, Dorothy Acheson.
 2nd Row: Sandra Cue, Carol Groustra, Pat McNichols, Diane Dieter.
 1st Row: Dolores Heinz, Kay Wheeler, Miss Offner, Dolores Dieter, Georgeanna Harbelis.

Lettermen's Club



3rd Row: Lawrence Pesetski, John Deitz, Richard Averill, Wayne Todd, Orland Barbrey, Dean Kroning, Chalmer Jacob, Charles Hill, Bob Kovac.
 2nd Row: Otto Homer, John McAleese, Donald Griffin, Bob Lanz, Leonard Bartsch, Bruce Nelson, Eddie Dierking, Mike Lellios.
 1st Row: Coach Robert Price, James Golan, Jack Kline, Sec. Treas.; Bob Raymond, Pres.; Gene Pazin, Vice Pres.; James Lane, Coach Howard Fletcher.

Cheerleaders



Cathy Heiser, Pat Streit, Cookie Harbelis, Suzi Dettmann.

We Go Staff



5th Row: Austin Utterback, Georgeanna Chestnut, Geraldine Gurbaki, Jean Carlson, John Deitz, Sally Rucker, Connie Sprague, Andrea Purdy, Nancy Lyon.
 4th Row: Glen Schlueter, Bob Raymond, Jack Kline, Connie Judd, Lucy Wilcox, Audrey Hattendorf, Elaine Booth.
 3rd Row: Lela Stillman, Suzi Dettmann, Carole Brown, Dixie Claffin, Bette Sheehan, Joyce Watanabe, Diana Burns, Kathy Diehl, Marlene Heinz.
 2nd Row: Maureen Baker, Dorothy Dabbert, Louise Streit, Lois Wheeland, Mary Struckman, Dorothy Gramer, Lois Lenertz, Georgeanna Harbelis, Tommy Kearns.
 1st Row: Ann Moore (Adviser), Pat Streit, Sandra Lunak (Student Adviser), Audrey Jarchow (Editor), Jayne Moore (Publisher), Roy Kiiskila (Adviser).

Band



3rd Row: Kenneth Jahns, Robert Levey, Michael Johnson, Bruce McMahan, Mr. Howard, Linda Stone, Lyrle Cue, Arvilla Schram, Janice Wegener.
 2nd Row: Rodney Kullman, Albert Catriz, Herman Stahl, Robert Lanz, Otto Homer, Dick Kerner, Dick Sauer, Betty Lootens, Edward Dierking, Don Thielking, Dolores Heinz, Lois McLeod, Robert Hensel, William Lanz, Robert Raymond, James Golan, Dorothy Dabbert, Grace Cain, Pat Hensel, Chan Cook, Don Homer, Floyd Brown, Kenneth Wheeland.
 1st Row: David Bond, Connie Judd, Suzi Dettmann, Barbara Hutson, Carole Brown, Doris Geiken, Beverly Glasshagel, Barbara Russell, Sharon Stone, Marilyn Brown, Mary Scobey, Nathlee Ann Bradley, Audrey Wegener, Mary Pendell, Charles Buhr, Glenn Nottingham, Virginia Fowler, Jack Kline.

Orchestra



3rd Row: Diana Burns, Mr. Howard, Grace Cain, Pat Hensel, Audrey Wegener, Mary Scobey, Albert Catriz, Gloria Brown, Thomas Rucker, Bruce McMahan, John Donahue, Robert Levey.
 2nd Row: Janet Cobain, Jean Wilson, Margaret Giese, David Swanson, Suzi Gerbers, Carole Brown, Mary Lovellette, Wayne Rohr, Wayne Hensel, Doris Geiken, William Lanz, Barbara Russell.
 1st Row: Mary Pendell, Georgeanne Chestnut, Loane Dettmann, Daniel Crane, Michael Johnson, William Jahns, Nancy Saeck, Jacqueline Burns, Doris Buhr, Carol Groustra, Patricia McNichols.

Freshman Chorus



3rd Row: Nathlee Ann Bradley, Joan Bryson, Martha Patch, Evabeth Stillman, Betty Ann Lootens, Gayle Brooks, Louise Streit, Mary Jane Buckley, Loane Dettmann, Mary Ann Gardner.
 2nd Row: Lois Wheeland, Shirley McAleese, Lela Fischer, Irene Munson, Marilyn Heinberg, Lyrle Cue, Nancy Rakow, Marie Bollweg, Genevieve Main.
 1st Row: Ellen Heiser, Lela Stillman, Bette Lou Dieter, Nancy Heinz, Janice Wegener, Gloria Kozlowski, Ann Davis, Jane Karp, Barbara Kruse.
 Seated: Miss L. Abbot.

Glee Club



3rd Row: Dorothy Dabbert, Mary Ann Scobey, Audrey Jarchow, Jean Carlson, Sally Rucker, Ann Owen, Georgiana Giambri, Marilyn Brown.
 2nd Row: Miss L. Abbot, Dorothy Gramer, Lois Lenertz, Rita Pietrobon, Georgeanna Chestnut, Connie Judd, Gerry Gurbacki, Jean Crawford.
 1st Row: Suzi Dettmann, Diana Burns, Pat Burhans, Carole Brown, Irene Scobey, Alice Pester.

Art Class



4th Row: Carlotta Brown, Betty Lootens, Dave Phillips, Connie Judd, Glen Ives, Grace Wiesbrock, Janet Hammer.
 3rd Row: Nathlee Bradley, Mary Phillips, John Lockie, Don Zuehlke, Lawrence Pesetaki, Ann Owen, Marjorie Armbrust.
 2nd Row: Lela Stillman, Barbara Reed, Dick Taylor, Arnold Babcock, Barbara Hutson, Pat Burhans.
 1st Row: Connie Sprague, Sandra Cue, Mrs. Ryan, Bill Burhans, Mary Ann Scobey, Virginia Fowler.

"Three Blind Dates"



2nd Row: Dick Snyder as Mr. Ellis, Mary Pendell as Mrs. Ellis, Miss Koupal, Director, Jack Kline as Neil Olson, Kay Wheeler as Cora Ridgely, Bob Raymond as George Ellis.
 1st Row: Dorothy Dabbert as Janet Smith, Carol Groustra as Katy Ellis, Dixie Clafin as Tessie Adams, Janet Finical as Helen Woods, Dolores Dieter as Ada Clark.

"Candid Capers"



Years and Years Ago



